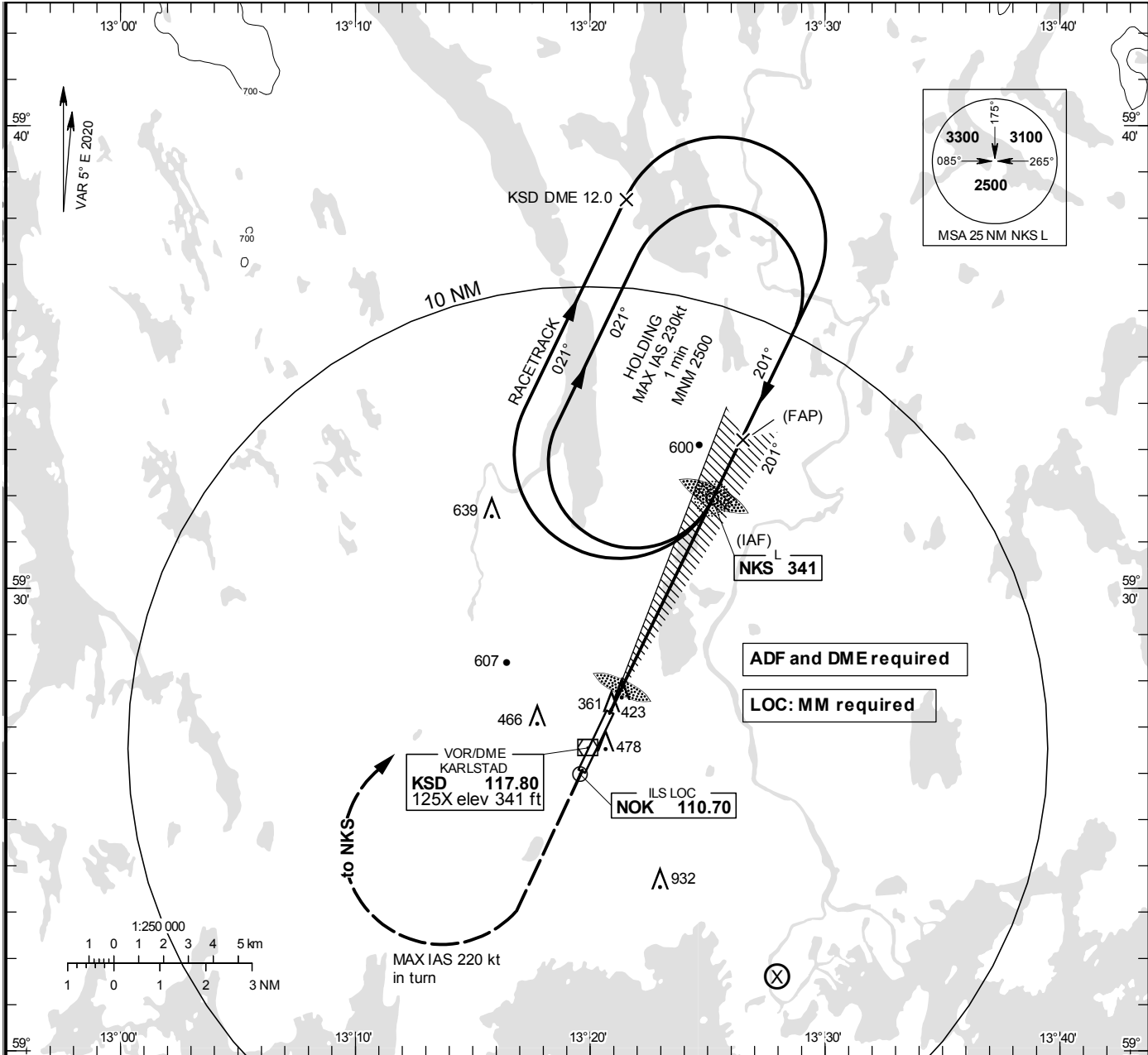


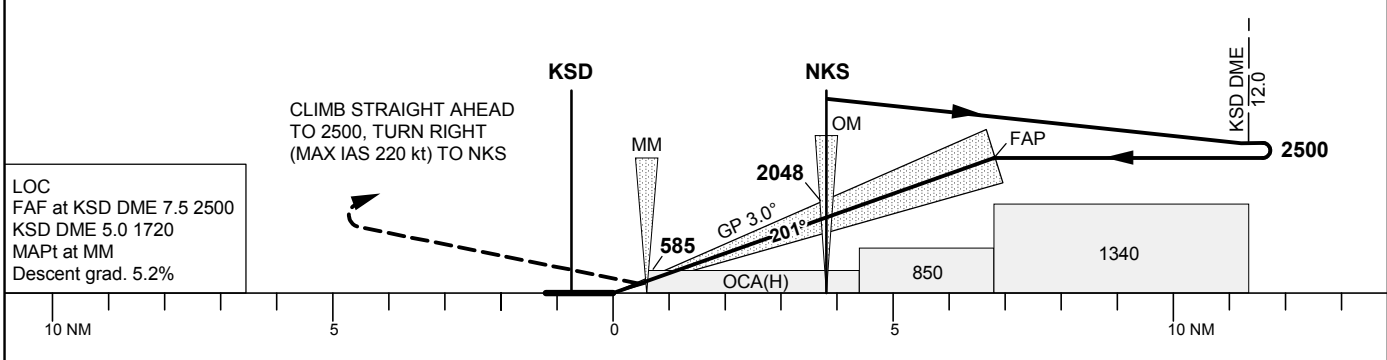
INSTRUMENT
APPROACH
CHART – ICAO

THR ELEV 352.9 ft, AD ELEV 353 ft
OCH are related to THR.
Circling OCH are related to AD ELEV.
BRG are MAG
ALT, HGT and ELEV in ft.

KARLSTAD TOWER 119.455



TA 5000 ft AMSL RDH 51.5 ft Circling MAX IAS 200 kt *Timing not authorized for defining the MAPt



OCA(H)					Final approach		LOC Distance FAF-MAPt 6.1 NM*					
Cat of ACFT	A	B	C	D	DME KSD NM		7	6	5	4	3	2
Straight-in	500(148)	508(156)	519(167)	527(175)	ALT		2360	2040	1720	1400	1080	760
Approach	670(320)				GS	kt	80	100	120	140	160	180
Circling	780(430)	910(560)	1330(980)	1330(980)	Time	min:s	4:32	3:38	3:02	2:36	2:16	2:01
Circling NW RWY	770(420)	910(560)	1010(660)	1040(690)	Rate of descent	ft/min	425	530	635	745	850	955